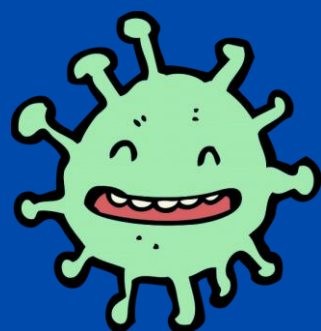
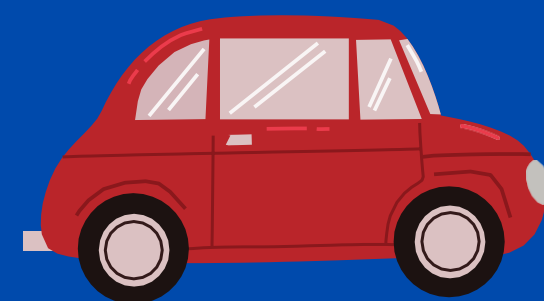


THE DRIVE



'FLU'



We recently informed you that Sovereign Health Network (Highlands, Jubilee & Whiteley Surgeries) will be operating a drive through flu clinic at Fareham Community Hospital from September onwards.

For those patients eligible for a flu vaccination you will shortly be receiving a letter detailing your appointment date and time.

Please follow the below steps in preparation for your vaccination.

Please remain in your car at ALL times. Your flu vaccination will be administered whilst you are sat in your car

Ensure you are wearing clothes that are easy to remove to expose the arm and shoulder

Do not arrive early for your appointment, to ensure patient safety we are asking all patients to attend at the time specified on your letter

YOU MUST WEAR A FACE COVERING TO YOUR APPOINTMENT

What to expect on the day of your appointment:

- A traffic marshal will greet you as you drive into the hospital entrance and direct you to the appropriate station
- Please turn your engine off and ensure your handbrake is on when you arrive at the bay.
- Once in the station please hand the voucher at the bottom of the letter to the clinician as proof of eligibility for the vaccination. We will be unable to vaccinate you without this voucher.
- On the next page you will see a layout of Fareham Community hospital and the traffic system that will be in place on the day.





-  Marshall point
-  Vaccination zone
-  Control tent
-  Cars arriving/leaving
-  Safety zone
-  Traffic route
-  Patient Vaccination